



Nepal Australia Friendship Association Qld. Inc.
(Established 1989)

NAFA priorities in Covid-19 affected 2021-22

President's Message

Another COVID year, but again, thanks to wonderful support from NAFA's donor network and generous donations from loyal philanthropists NAFA continued to support its ongoing health, disability, education and childcare commitments, as well as fund important one-off projects. In March 2022 senior executive officers were able to visit most of NAFA's funded projects in Nepal.

NAFA's four priorities in 2021 and so far in 2022 continue to be:

- 1. Completing earthquake rebuild of the primary schools in the remote villages of Richet and Kichet in the Dhading district.**
- 2. Providing COVID-19 personal protective equipment, supplies and other support e.g., food packages for NAFA-funded partners and local communities.**
- 3. Meeting ongoing health, disability, education and childcare commitments.**
- 4. Supporting economic development for farmers in a remote area recovering from the 2015 earthquake.**

Further details are in the President's Report for 2021, which is now on the NAFA website (www.nafa.org.au). We have been able to achieve these priorities through the continued generosity of NAFA supporters and our guarantee that 100% of donations go directly to Nepal.

I have included photos taken on our recent visit to Nepal. I hope you find this newsletter informative and that it inspires you to continue to support NAFA through either regular or one-off donations. Please visit NAFA's website (www.nafa.org.au/donations) to donate now.

In the meantime, please stay well as we try and live with the ongoing effects of COVID. Hopefully, in the not-too-distant future, we will be able to get together once again in person to celebrate an organisation that continues to make a real difference to the lives of so many women, children, families and communities in Nepal.

Rod Setterlund OAM
President

Completing rebuild of Richet and Kichet primary schools

NAFA completed the rebuild of two primary schools destroyed by the 2015 Gorkha earthquake, thanks to the generosity of two of NAFA's donors, the Hare family and the Goldberg Foundation. This brought the total of NAFA's allocations to the rebuild response to the 2015 earthquakes to approximately \$875,000, after \$96,000 was allocated in 2015 as an initial response e.g. roofing tin and rice.

Last of 8 classrooms rebuilt at Richet school



3 classrooms rebuilt at Kichet school



Below: Inside newly built classroom at Kichet



Window shutters will keep out snow & monsoon rains



Providing COVID-19 personal protective items and food packages

NAFA allocated nearly \$8,000 for COVID-19 support in 2021, bringing our total COVID-related allocations to over \$21,000. We provided additional personal protective equipment and supplies to 5 NAFA-funded partners, a school and the local community in Thimi and people with a disability in Pokhara. NAFA also partnered with Joy Foundation Nepal to support front-line health workers in Nepal.

Wash basins at VSN school in Thimi



Villager with COVID-19 using oxygen concentrator in Tawal health post

Meeting ongoing education, health, disability and childcare commitments

NAFA is proud of the range and depth of its ongoing programs. They cover the areas of education, childcare, disability and health, in remote villages, regional towns and Kathmandu.

Education

Nearly \$38,000 was allocated to ongoing education programs: Child sponsorship, further education and training and remote schoolteacher salaries. Supported students from poor families included 28 disadvantaged children sponsored under NAFA's Child Sponsorship Program attending Vinayak Shiksha Niketan (VSN) school. Thirteen students were also sponsored under NAFA's Further Education and Training (FEAT) program from VSN, a school in the remote village of Tawal and a student from Prisoners Assistance (PA) Nepal. In 2021 these students studied medicine, nursing, education, commerce, chartered accountancy and hotel management.

NAFA also sponsors two teachers in the remote village of Tawal that enables it to provide secondary school education up to Grade 10 for students from 6 local villages. NAFA also supported a school and after-school program in the remote village of Gamauli in western Nepal.

Library resources at Gamauli



Surendra & sponsored student at VSN



Deborah with FEAT-sponsored students at Tawal



Childcare

NAFA supports two childcare centres: a childcare crèche for carpet factory families in Thimi and a childcare centre for poor families operated by the Butterfly Foundation in Pokhara.



Thimi childcare creche for carpet factory and other poor families



Health

Over \$13,000 was allocated in 2021 to 3 ongoing health programs.

NAFA subsidises the salaries of two health workers, providing primary health care to over 3,000 people living in Tawal and 4 other nearby villages.

Rebuilt Tawal health post servicing 5 local villages



Lila Maya checks blood pressure of local villager



NAFA continues to be a proud supporter of Himalayan Health & Hearing (HH&H), which works in partnership with Keshab Dangol, an Otologist with the Nepalese Association of Hard of Hearing (NAHOH). NAHOH is also supported by NAFA to provide hearing care in outreach camps in the Kathmandu Valley and beyond in remote areas of Nepal. Although Covid-19 has restricted the activities that NAHOH could provide to the community, Keshab played an invaluable support role to NAFA, sourcing and arranging the delivery of Covid-19 related personal protective equipment and supplies to NAHOH and other NAFA funded partners in Kathmandu, Thimi, Pokhara and the remote village of Tawal.

Kesbab assesses man for hearing loss during peak of COVID in full protective clothing



Disability

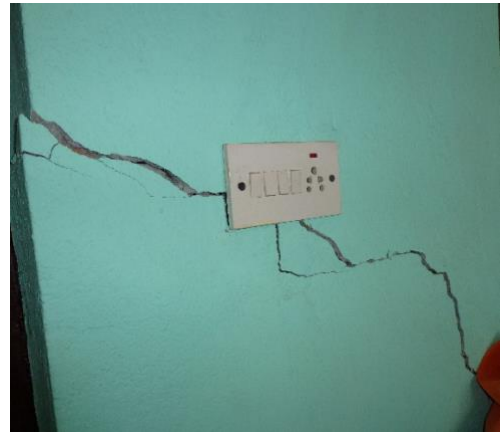
NAFA allocated 7,400 to Sungava Home, which provides day care and vocational training to young women with an intellectual disability. In March 2022, NAFA executive officers visited Sungava Home after receiving news that the walls and roof of the home are displaying signs of severe structural damage due to ground subsiding. An Engineer from the local municipal government assessed the damage and said that the building was structurally unsafe, and should be vacated as soon as it could be arranged.

NAFA is supporting a proposal to repair two buildings on an adjoining property and temporarily move the operations of the home until the land can be sold and a new home built. Please help us support the move by making a tax-deductible donation before 30 June by visiting [nafa.org.au/donations to donate now](https://nafa.org.au/donations-to-donate-now).

Young women having lunch at Sungava Home



Cracks in walls at Sungava caused by 2015 earthquake



Supporting economic development for farmers recovering from 2015 earthquake

NAFA's fourth priority in 2021 was made possible through the generosity of two philanthropic foundations (English Family Foundation, Goldberg Foundation and the Tucker Foundation) and two generous NAFA donors. These philanthropists have accelerated the important role that the locally-based agricultural cooperative has played in re-establishing economic livelihoods and developing new pathways out of poverty following the earthquake in 2015. These initiatives included:

- third year funding of a three-year Growth and Sustainability project aimed at growing the Pasang Chowk Agricultural Cooperative;
- the establishment of a fish farm initiative for a "next generation" farmer; and
- a noodle-making initiative to be managed by women members of the Cooperative.

Fish farming initiative for "next generation" Cooperative member



First batch of fresh noodles from noodle-making initiative



The Growth and Sustainability project reports some impressive outcomes in its first three years:

- increasing collective net savings of Cooperative members from 20 lakhs (\$23,500) to 54 lakhs (\$63,529);
- increasing coffee production in the area through the propagation of coffee plants in the hi-tech nursery and coffee sales through the Cooperative to 1,200 kgs;
- growing of spices such as sichuan pepper on the land owned by the Coop and by the growth in the planting and sale of cardamom by the Coop and members of the Coop collectively;
- improving the income (electric dynamos and Sungur pigs) of Dalit families. This initiative has provided the surplus cash they needed to construct simple houses on land provided to them when they were invited into the area over 100 years ago to do metalwork.
- success in attracting two Nepal government grants:
 1. Federal grant of 6 lakhs (\$7,059) to expand coffee production in the area (coffee plants, irrigation pipes, a coffee huller for each village and 2 additional 'simple' nurseries).
 2. Ward grant of 5 lakhs (\$5,882) to bring the road to the edge of the land owned by the Coop.

Coffee huller and 'simple' greenhouses funded by Nepal government grants



Meeting with Dalit women to discuss income-earning initiatives and other matters



Pig pen (foreground) and 'simple' house constructed by Dalit family with funds generated by NAFA-supported improved income-earning initiatives

